



Macmillan Online Teacher Campus

Start an online short course today

Why choose MOTC?



Trending topics



Affordable



SACE PD Points



Downloadable resources



Certification



User friendly



Learn something new

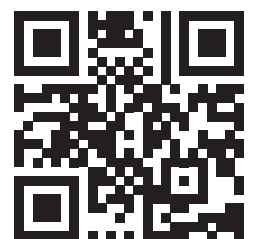


Academic improvement



Anytime, anywhere

ENROL TODAY

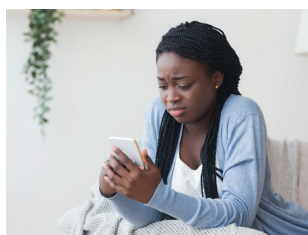


Courses



Curriculum Planning and Management for Departmental Heads

Macmillan Teacher Campus has developed the perfect training programme for both novice and seasoned Departmental Heads. Let us help you hone in on your management skills by assisting you with the necessary tools and techniques.



Cyber Safety

This workshop gives insight into the dangers that lurk online and will empower you to manage cyberbullying in your school.



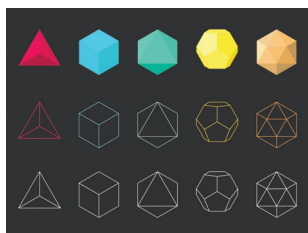
Manage the Change to eLearning

Moving from a paper-based to a digital approach to education can be difficult. This course will help to make it easier, by identifying the need for change, investigating the change process and identifying the key factors for successful change.



Teaching Natural Sciences

The Teaching Natural Sciences course outlines teaching Natural Sciences as described in the CAPS document. It covers the different teaching methodologies used at Senior Phase level, as well as the advantages of using each one.



Geometry of 2D and 3D Shapes

After taking the course Geometry of 2D and 3D Shapes, you will be able to identify, name and describe the properties of the 2D shapes and 3D models. Solve geometric problems and use nets to create models of geometric solids.



Problem Solving in Foundation Phase

The course Problem Solving in the Foundation Phase will enable you to successfully teach and assess problem-solving strategies to young learners, so that the learners can confidently solve problems in the mathematics classroom.



Common Fractions

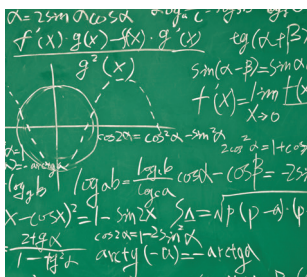
After taking this course on fractions, you will be able to define, order and compare common fractions, and be comfortable with ascending and descending order as well as the use of inequality signs and equivalent fractions.

Courses



Human Relations

You will be able to describe what emotional intelligence is and reflect upon your own in order to understand interactions with others more clearly.



FET Trigonometry

After taking this course on trigonometry you will develop confidence in using trigonometric concepts and trigonometric equations, and in solving triangles so you can familiarise yourself with the teaching tips for the above-mentioned.



Time and Stress Management

After taking the course Time and Stress Management you will be able to understand how to manage yourself in a way that empowers you to be better at managing your time and stress levels.



School Media Centre

After taking this course on establishing and managing a school media centre you will be able to better manage your school's media centre, so it can be a functional space where learners and educators can read, obtain and share knowledge.



School-based Assessment in Natural Sciences

After taking the course School-based Assessment in Natural Sciences, you will be able to apply school-based assessment with confidence, so that you can have a better understanding of learner performance in your class.




Conflict Management

Understand the importance of attitudes, perceptions and positive behaviour during conflict handling, and identify and apply the steps in the suggested conflict handling model in the workplace and future conflict situations.

Frequently asked questions

How do I purchase a course?

1. Click on the "All courses" tab.
2. Select the desired course/s and click "Add to cart".
3. Click on the cart icon  and select "Checkout". You will then be directed to the payment page.
4. Once you have filled in the necessary details and paid for the course, you will be successfully registered.

How do I register my SACE Points?

1. Visit the SACE website on <https://www.sace.gov.za/>.
2. Click on the CPTD-IS tab to log in.
3. You will then be able to register your points once your courses have been loaded for PD point allocation as a self-initiated event.

How do I purchase more than one of the same course for colleagues?

Please send an email to za.mtc@macmillaneducation.co.za to request a pro forma invoice. Each colleague will receive a generated voucher, which can be used as a form of payment under their own account.

How do I pay for a course?

1. Once you have selected the desired course/s, added it/them to your cart and selected "Check out", you will be directed to the information page.
2. Fill in the required details and click "Continue to payment". You will then be directed to the payment page.
3. If your contact and billing information are both correct, click "Complete order".
4. Select your preferred payment method and follow the prompts.
5. Once the order has been processed and the transaction is successful, you will be redirected to the official website and notified that the order is confirmed.

Will more courses be added?

Yes! MOTC is continuously working on adding more courses. Once you have added your course/s to the cart and clicked "Check out" you will be directed to the payment page. Please select the checkbox next to, "Keep me up to date on news and offers", to receive notification emails on our exciting offers and new course content. Alternatively, you can check our website <https://shop.motc.co.za/collections/all> regularly in order to be kept up to date as new courses are loaded.

How do I access my certificate?

Your certificate will be made available for download on the course menu, but only upon successful completion of a course.